

\$146,000 - 109 Wilkins Place Crescent, Hanna

MLS® #SC0061748

\$146,000

0 Bedroom, 0.00 Bathroom,
Land on 0.48 Acres

Hanna, Hanna, Alberta

Build your dream home! A large lot which is .48 acres with a beautiful view of the golf course. The seller will divide lot into 2 lots and sell 1 for \$74,000.00. Lot plan and Real Property Report available to view. "Information is believed to be accurate but not warranted to be so".



Essential Information

| | |
|-----------|-----------|
| MLS® # | SC0061748 |
| Price | \$146,000 |
| Bathrooms | 0.00 |
| Acres | 0.48 |
| Type | Land |
| Sub-Type | Land |
| Status | Active |

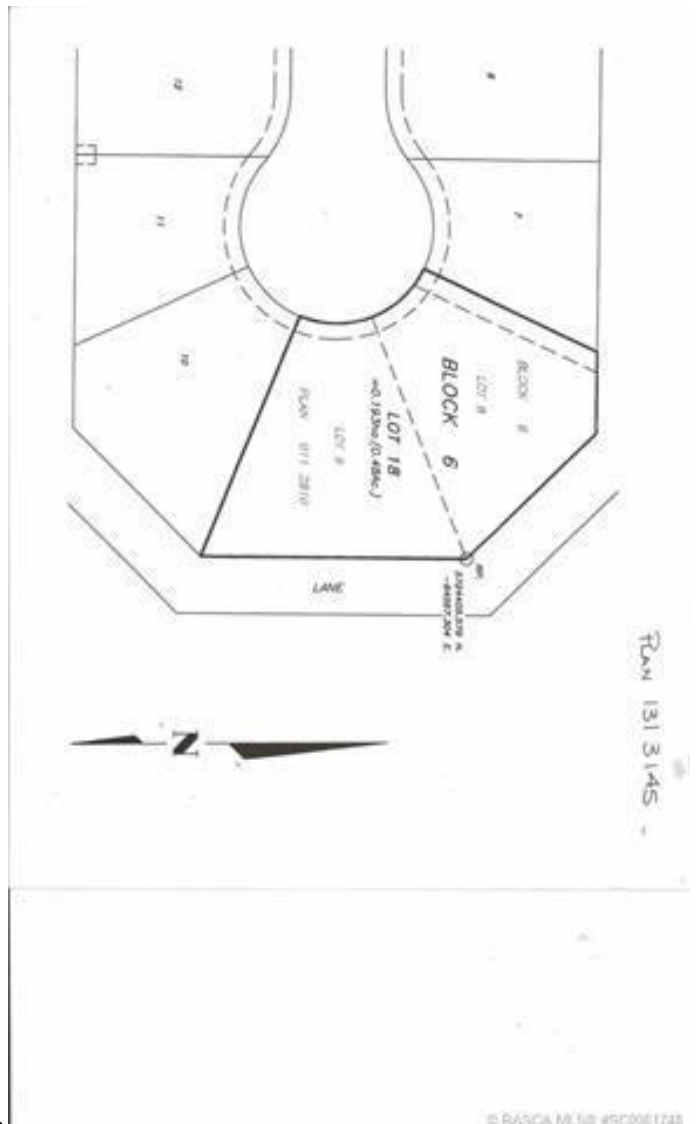
Community Information

| | |
|-------------|----------------------------|
| Address | 109 Wilkins Place Crescent |
| Subdivision | Hanna |
| City | Hanna |
| County | Special Area 2 |
| Province | Alberta |
| Postal Code | T0J 1P0 |

Amenities

| | |
|-----------|--|
| Utilities | Electricity Available, Sewer Available |
| Parking | None |

Exterior



© RASCA MLS® #SC0061748

Lot Description Standard Shaped Lot, Near Golf Course

Additional Information

Date Listed June 3rd, 2015

Days on Market 3598

Zoning R1

Listing Details

Listing Office Hanna Realty

Data is supplied by Pillar 9â„¢ MLSÂ® System. Pillar 9â„¢ is the owner of the copyright in its MLSÂ® System. Data is deemed reliable but is not guaranteed accurate by Pillar 9â„¢. The trademarks MLSÂ®, Multiple Listing ServiceÂ® and the associated logos are owned by The Canadian Real Estate Association (CREA) and identify the quality of services provided by real estate professionals who are members of CREA. Used under license.