

\$1,479,000 - 2041 48 Avenue Sw, Calgary

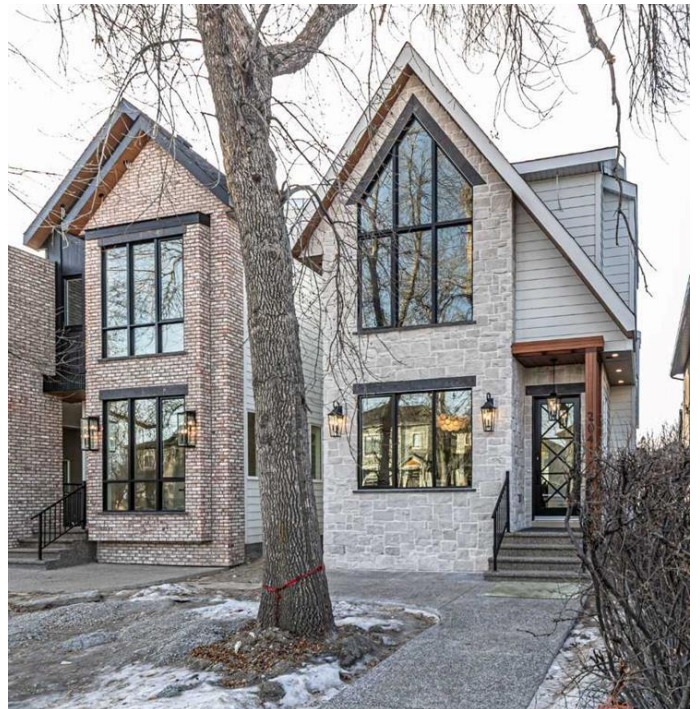
MLS® #A2190825

\$1,479,000

4 Bedroom, 4.00 Bathroom, 1,993 sqft
Residential on 0.07 Acres

Altadore, Calgary, Alberta

*Open House on Saturday March 29th 1-3:30 pm***Welcome home to an exceptional new build by inner city Master Builder Palatial homes Ltd. Located on a quiet street with south facing backyard in a very desirable community of Altadore.. WALKING DISTANCE to Glenmore aquatic centre, Glenmore athletic park, the Flames community arenas and many schools. Perfect place to raise family and enjoy a contemporary lifestyle with all amenities and shopping nearby. This home offers a unique blend of modern elegance and functional craftsmanship. Enter this custom designed home through the north facing front door into bright and open main floor layout with 10 ft. ceilings and Gleaming natural oak Herringbone hardwood. Central Gourmet chef-inspired kitchen with High end JennAir appliances and Porcelain(not quartz or granite) countertops with ceiling height cabinetry and storage. Cozy living room with natural gas fireplace and built-ins is perfect for everyday family living and holiday gatherings. Extra large tile floored Mudroom is meticulously positioned to keep muddy and snowy shoes out of sight. Upstairs offers 3 very good sized bedrooms. The luxurious master ensuite offers spa-like private retreat with in-floor heating, porcelain countertop double sink vanity , freestanding bath tub and walk-in tile finished shower. Private toilet. Two more good sized bedrooms with jack and jill bathroom. Fully finished basement with bedroom, bar and family room providing extra space for growing



family among many other options. Exterior is fully finished with hardie board and stone. Sunny south facing deck is perfect for evening hangouts and BBQs. Double detached rear car garage with paved back lane. Landscaping to be completed in early spring. Call or email for more information.

Built in 2025

Essential Information

MLS® #	A2190825
Price	\$1,479,000
Bedrooms	4
Bathrooms	4.00
Full Baths	3
Half Baths	1
Square Footage	1,993
Acres	0.07
Year Built	2025
Type	Residential
Sub-Type	Detached
Style	2 Storey
Status	Active

Community Information

Address	2041 48 Avenue Sw
Subdivision	Altadore
City	Calgary
County	Calgary
Province	Alberta
Postal Code	T2T2T6

Amenities

Parking Spaces	3
Parking	Double Garage Detached
# of Garages	2

Interior

Interior Features	Double Vanity, Kitchen Island, Soaking Tub, Bar, Built-in Fridge, Storage, Sump Pump(s), Vaulted Ceiling
Appliances	Dishwasher, Microwave, Refrigerator, Water Heater, Humidifier, Washers/Dryers
Heating	Forced Air, Natural Gas, Roughed-In
Cooling	None
Fireplace	Yes
# of Fireplaces	1
Fireplaces	Gas, Brick Facing, Glass Doors, Mantle
Has Basement	Yes
Basement	Full, Finished



Exterior

Exterior Features	BBQ gas line, Lighting
Lot Description	Back Yard, Back Lane, Front Yard
Roof	Asphalt Shingle
Construction	Stone, Wood Frame, Concrete
Foundation	Poured Concrete

Additional Information

Date Listed	January 29th, 2025
Days on Market	85
Zoning	RC2

Listing Details

Listing Office	URBAN-REALTY.ca
----------------	-----------------

Data is supplied by Pillar 9â„¢ MLSÂ® System. Pillar 9â„¢ is the owner of the copyright in its MLSÂ® System. Data is deemed reliable but is not guaranteed accurate by Pillar 9â„¢. The trademarks MLSÂ®, Multiple Listing ServiceÂ® and the associated logos are owned by The Canadian Real Estate Association (CREA) and identify the quality of services provided by real estate professionals who are members of CREA. Used under license.