

\$147,000 - On Township Road 424, Rural Ponoka County

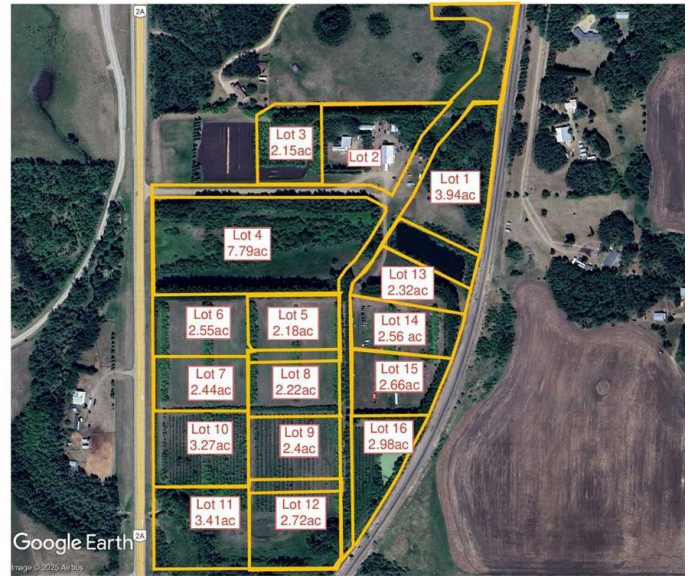
MLS® #A2188621

\$147,000

0 Bedroom, 0.00 Bathroom,
Land on 2.72 Acres

N/A, Rural Ponoka County, Alberta

2.72 acres in the new subdivision of McCarty Acres (lot #12)! This could be the opportunity you've been waiting for, one of 15 available acreages ranging between 2.15 and 7.78 acres with a great location close to Ponoka, hwy 2A, QE2 and all the superb conveniences that central Alberta has to offer. McCarty Acres has a satisfying mix of treed and open space that will accommodate your plans for your dream acreage whether it's a modest, elaborate home or maybe even that Barndominium or Shouse you've thought about. GST is included in purchase price.



Essential Information

MLS® #	A2188621
Price	\$147,000
Bathrooms	0.00
Acres	2.72
Type	Land
Sub-Type	Residential Land
Status	Active

Community Information

Address	On Township Road 424
Subdivision	N/A
City	Rural Ponoka County
County	Ponoka County

Province	Alberta
Postal Code	T4J 1R3

Additional Information

Date Listed	January 15th, 2025
Days on Market	95
Zoning	CR

Listing Details

Listing Office	RE/MAX real estate central alberta
----------------	------------------------------------

Data is supplied by Pillar 9â„¢ MLSÂ® System. Pillar 9â„¢ is the owner of the copyright in its MLSÂ® System. Data is deemed reliable but is not guaranteed accurate by Pillar 9â„¢. The trademarks MLSÂ®, Multiple Listing ServiceÂ® and the associated logos are owned by The Canadian Real Estate Association (CREA) and identify the quality of services provided by real estate professionals who are members of CREA. Used under license.