

\$4,650,000 - 512 Moraine Road Ne, Calgary

MLS® #A2186665

\$4,650,000

0 Bedroom, 0.00 Bathroom,
Commercial on 1.10 Acres

Meridian, Calgary, Alberta

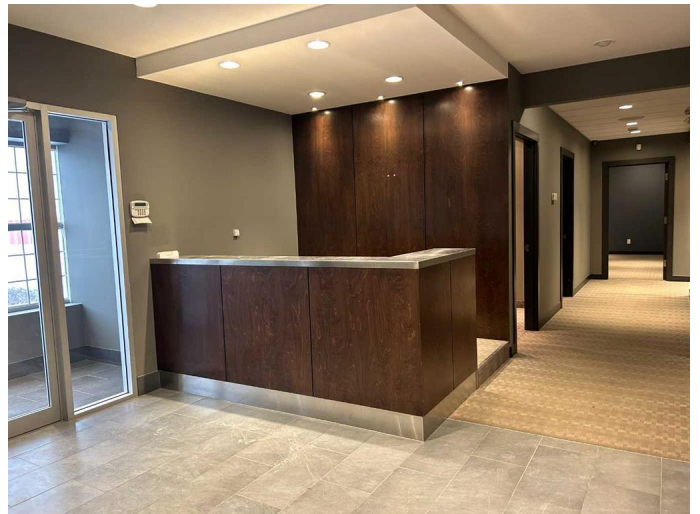
Attractive industrial building with great city and mountain views. Centrally located just off Barlow Trail, and blocks from Memorial Drive NE. Professionally developed office space, and clean warehouse bays. Constructed in 2004 with new pre-cast concrete. Radiant heating in warehouse, plus a total of 2 drains and 2 sumps. Designed to accommodate 4 separate bays. Currently demised into 2 Bays or 14,250 SqFt, (currently available) and 7,000 SqFt (leased with income of \$70,000 per year with steps). The 14,250 SqFt has approximately 10 offices, boardrooms, kitchen, and washrooms, plus an office and washroom with shower in warehouse.

Professionally developed 2nd floor office with the 7,000 SqFt bay. Storage mezzanine in the larger bay has potential for future development. 15 parking stalls at the front of the building plus room for at least 16 additional stalls at rear of building or yard storage. One block off Barlow Trail, with quick access to Memorial Drive and Deerfoot Trail, minutes to DT Calgary, 15 minutes to the International Airport.

Built in 2004

Essential Information

| | |
|-----------|-------------|
| MLS® # | A2186665 |
| Price | \$4,650,000 |
| Bathrooms | 0.00 |



| | |
|------------|------------|
| Acres | 1.10 |
| Year Built | 2004 |
| Type | Commercial |
| Sub-Type | Industrial |
| Status | Active |

Community Information

| | |
|-------------|---------------------|
| Address | 512 Moraine Road Ne |
| Subdivision | Meridian |
| City | Calgary |
| County | Calgary |
| Province | Alberta |
| Postal Code | T2A 2P2 |

Amenities

| | |
|----------------|----|
| Parking Spaces | 30 |
|----------------|----|

Interior

| | |
|---------|-----------------------------------|
| Heating | Natural Gas, Combination, Radiant |
| Cooling | Partial |

Exterior

| | |
|-----------------|---|
| Lot Description | Landscaped, Low Maintenance Landscape, Paved, Level |
| Roof | Flat, Tar/Gravel |
| Foundation | Poured Concrete |

Additional Information

| | |
|----------------|-------------------|
| Date Listed | January 9th, 2025 |
| Days on Market | 101 |
| Zoning | I-G |

Listing Details

| | |
|----------------|------------------------|
| Listing Office | RE/MAX Complete Realty |
|----------------|------------------------|

Data is supplied by Pillar 9â„¢ MLSÂ® System. Pillar 9â„¢ is the owner of the copyright in its MLSÂ® System. Data is deemed reliable but is not guaranteed accurate by Pillar 9â„¢. The trademarks MLSÂ®, Multiple Listing ServiceÂ® and the associated logos are owned by The Canadian Real Estate Association (CREA) and identify the quality of services provided by real estate professionals who are members of CREA. Used under license.