

# \$55,000 - 5222 Imperial Lane, Coronation

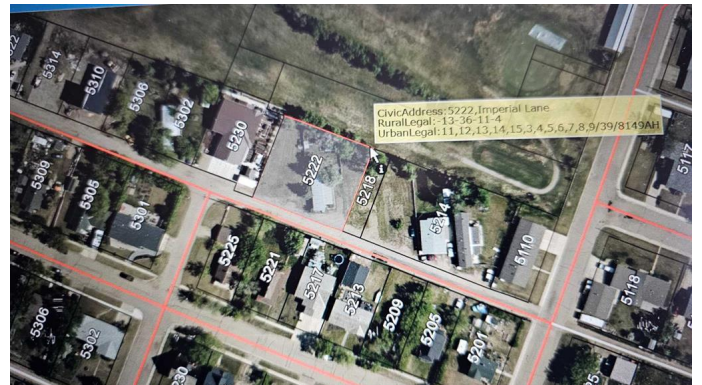
MLS® #A2165465

**\$55,000**

0 Bedroom, 0.00 Bathroom,  
Land on 0.26 Acres

NONE, Coronation, Alberta

XLarge lot in Coronation, backs onto Coronation Golf Course, four-25 ft lots-12-15, on existing title 0036583757, empty lots 9-11 to the east have not been developed are for sale also @ \$35000- 5018 Imperial Lane, Linc#0015720287.



## Essential Information

MLS® #	A2165465
Price	\$55,000
Bathrooms	0.00
Acres	0.26
Type	Land
Sub-Type	Residential Land
Status	Active

## Community Information

Address	5222 Imperial Lane
Subdivision	NONE
City	Coronation
County	Paintearth No. 18, County of
Province	Alberta
Postal Code	T0C1C0

## Additional Information

Date Listed	September 13th, 2024
Days on Market	220
Zoning	R1

## Listing Details

Listing Office

Sutton Landmark Realty

Data is supplied by Pillar 9â„¸ MLSÂ® System. Pillar 9â„¸ is the owner of the copyright in its MLSÂ® System. Data is deemed reliable but is not guaranteed accurate by Pillar 9â„¸. The trademarks MLSÂ®, Multiple Listing ServiceÂ® and the associated logos are owned by The Canadian Real Estate Association (CREA) and identify the quality of services provided by real estate professionals who are members of CREA. Used under license.