

# \$350,000 - Lot 24, Block 10 Plan 0929966, Plamondon

---

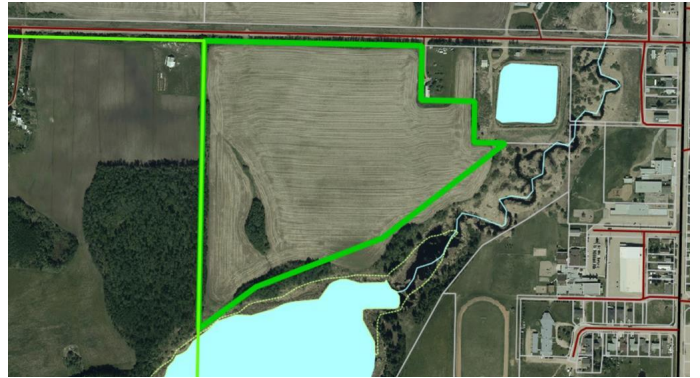
MLS® #A1062183

**\$350,000**

0 Bedroom, 0.00 Bathroom,  
Land on 38.75 Acres

NONE, Plamondon, Alberta

This parcel is 38.75 acres on the outskirts of the hamlet of Plamondon. It is considered development land but is currently rented as farm land. It is on the west side of Plamondon overlooking the hamlet and the Plamondon Creek.



## Essential Information

|           |           |
|-----------|-----------|
| MLS® #    | A1062183  |
| Price     | \$350,000 |
| Bathrooms | 0.00      |
| Acres     | 38.75     |
| Type      | Land      |
| Sub-Type  | Land      |
| Status    | Active    |

## Community Information

|             |                               |
|-------------|-------------------------------|
| Address     | Lot 24, Block 10 Plan 0929966 |
| Subdivision | NONE                          |
| City        | Plamondon                     |
| County      | Lac La Biche County           |
| Province    | Alberta                       |
| Postal Code | T0A 2T0                       |

## Additional Information

|                |                        |
|----------------|------------------------|
| Date Listed    | January 20th, 2021     |
| Days on Market | 1550                   |
| Zoning         | Urban Reserve District |

## Listing Details

Listing Office

PEOPLE 1st REALTY

Data is supplied by Pillar 9â„¢ MLSÂ® System. Pillar 9â„¢ is the owner of the copyright in its MLSÂ® System. Data is deemed reliable but is not guaranteed accurate by Pillar 9â„¢. The trademarks MLSÂ®, Multiple Listing ServiceÂ® and the associated logos are owned by The Canadian Real Estate Association (CREA) and identify the quality of services provided by real estate professionals who are members of CREA. Used under license.